

## 02 TUBOS POLIETILENO RETICULADO (PE-X) TUBES POLYÉTHYLÈNE RÉTICULÉ (PE-X) CROSSLINKED POLYETHYLENE PIPES

**Tubo PE-Xb**  
**Series 4.0 - 5.0**  
**Color blanco**

**Tube PE-Xb**  
**Séries 4.0 - 5.0**  
**Couleur blanc**

PE-Xb Pipe  
 Series 4.0 - 5.0  
 White colour



UNE EN ISO 15875

Ref.	Ø (e.)	M.	€/M
216208	● 12 (1,1) R.120M	3.240	0,52
216209	● 12 (1,1) R.200M	3.600	0,52
216127	● 16 (1,5) R.100M	2.700	0,93
216128	● 16 (1,5) R.200M	3.000	0,93
216002	● 16 (1,8) R.100M	2.700	1,05
216020	● 16 (1,8) R.200M	3.000	1,05
216021	● 16 (1,8) B.4M	200	1,05
216003	● 20 (1,9) R.100M	1.800	1,40
216022	● 20 (1,9) R.120M	2.160	1,40
216023	● 20 (1,9) R.200M	2.400	1,40
216024	● 20 (1,9) B.4M	100	1,40
216015	● 25 (2,3) R.50M	900	2,13
216025	● 25 (2,3) R.120M	1.440	2,13
216026	● 25 (2,3) B.4M	80	2,13
216008	● 32 (2,9) R.50M	800	3,44
216027	● 32 (2,9) B.4M	60	3,44
216009	● 40 (3,7) R.50M	300	5,82
216028	● 40 (3,7) B.4M	40	5,82
216010	● 50 (4,6) R.50M	50	9,08
216029	● 50 (4,6) B.4M	20	9,08
216054	● 63 (5,8) B.4M	4	14,41
216055	● 75 (6,8) B.4M	4	20,03
216056	● 90 (8,2) B.4M	4	28,78

**Tubo PE-Xb**  
**Serie 3.2 y medidas especiales**  
**Color blanco**

**TUBE PE-Xb**  
**Série 3.2 et dimensions spéciales**  
**Couleur blanc**

PE-Xb Pipe  
 Series 3.2 and special measurements  
 White colour



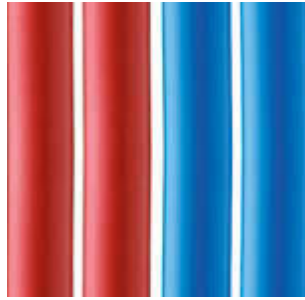
UNE EN ISO 15875

Ref.	Ø (e.)	M.	€/M
216001	● 12 (1,7) R.100M	2.700	0,79
216043	● 12 (2,0) R.100M	2.700	0,88
216044	● 16 (2,0) R.100M	2.700	1,23
216004	● 16 (2,2) R.100M	2.700	1,37
216030	● 16 (2,2) B.4M	200	1,37
216045	● 20 (2,0) R.100M	1.800	1,58
216005	● 20 (2,8) R.100M	1.800	2,05
216031	● 20 (2,8) B.4M	100	2,05
216006	● 25 (3,5) R.50M	900	3,17
216032	● 25 (3,5) B.4M	80	3,17
216007	● 32 (4,4) R.50M	800	5,09
216033	● 32 (4,4) B.4M	60	5,09

**Tubo PE-Xb**  
**Series 4.0 - 5.0**  
**Color rojo y azul**

**Tube PE-Xb**  
**Séries 4.0 - 5.0**  
**Couleur rouge et bleu**

PE-Xb Pipe  
 Series 4.0 - 5.0  
 Red and blue colour



UNE EN ISO 15875

Ref.	Ø (e.)	M.	€ / M
216046	● 12 (1,1) R.120M	3.240	0,58
216042	● 12 (1,1) R.200M	3.600	0,58
216195	● 12 (1,1) R.240M	4.320	0,58
216080	● 12 (1,1) R.120M	3.240	0,58
216057	● 12 (1,1) R.200M	3.600	0,58
216196	● 12 (1,1) R.240M	4.320	0,58
216073	● 16 (1,5) R.100M	2.700	0,99
216036	● 16 (1,5) R.200M	3.000	0,99
216187	● 16 (1,5) R.100M	2.700	0,99
216066	● 16 (1,5) R.200M	3.000	0,99
216052	● 16 (1,8) R.100M	2.700	1,15
216105	● 16 (1,8) R.200M	3.000	1,15
216061	● 16 (1,8) B.4M	200	1,15
216106	● 16 (1,8) R.100M	2.700	1,15
216107	● 16 (1,8) R.200M	3.000	1,15
216100	● 16 (1,8) B.4M	200	1,15
216065	● 20 (1,9) R.100M	1.800	1,54
216038	● 20 (1,9) R.120M	2.160	1,54
216039	● 20 (1,9) R.200M	2.400	1,54
216062	● 20 (1,9) B.4M	100	1,54
216108	● 20 (1,9) R.100M	1.800	1,54
216058	● 20 (1,9) R.120M	2.160	1,54
216070	● 20 (1,9) R.200M	2.400	1,54
216101	● 20 (1,9) B.4M	100	1,54
216040	● 25 (2,3) R.50M	900	2,35
216041	● 25 (2,3) R.120M	1.440	2,35
216063	● 25 (2,3) B.4M	80	2,35
216077	● 25 (2,3) R.50M	900	2,35
216067	● 25 (2,3) R.120M	1.440	2,35
216102	● 25 (2,3) B.4M	80	2,35
216075	● 32 (2,9) R.50M	800	3,79
216064	● 32 (2,9) B.4M	60	3,79
216109	● 32 (2,9) R.50M	800	3,79
216110	● 32 (2,9) B.4M	60	3,79

**Tubo PE-Xb / PE-RT**  
**Barrera Antioxígeno**  
**EVOH**  
**Color blanco**

**Tube PE-Xb / PE-RT**  
**Barrière Anti-Oxygène**  
**EVOH**  
**Couleur blanc**

PE-Xb / PE-RT pipe  
 Anti-Oxygen Barrier  
 EVOH  
 White colour



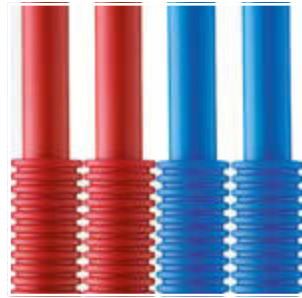
UNE EN ISO 15875  
 (PE-Xb)

UNE EN ISO 22391  
 (PE-RT)

**Tubo PE-Xb envainado**  
**Corrugado transparente**  
**Color rojo y azul**

**Tube PE-Xb prégainé**  
**Annelé transparent**  
**Couleur rouge et bleu**

Preinsulated PE-Xb pipe  
 Corrugated transparent  
 Red and blue colour



UNE EN ISO 15875

## PE-Xb

Ref.	Ø (e.)	M.	€/M
232070	● 12 (1,1) R.120M	3.240	0,68
232071	● 12 (1,1) R.200M	3.600	0,68
232044	● 16 (1,5) R.120M	2.160	1,23
232045	● 16 (1,5) R.200M	3.000	1,23
232046	● 16 (1,5) R.400M	400	1,23
232047	● 16 (1,5) R.500M	500	1,23
232002	● 16 (1,8) R.120M	2.160	1,30
232003	● 16 (1,8) R.200M	3.000	1,30
232014	● 16 (1,8) R.400M	400	1,30
232009	● 16 (1,8) R.500M	500	1,30
232004	● 20 (1,9) R.120M	2.160	1,79
232005	● 20 (1,9) R.200M	2.400	1,79

## PE-RT

Ref.	Ø (e.)	M.	€/M
248006	● 16 (1,8) R.200M	3.000	1,22
248007	● 16 (1,8) R.500M	500	1,22
248009	● 20 (1,9) R.120M	2.160	1,68
248010	● 20 (1,9) R.200M	2.400	1,68

Ref.	Ø (e.)	M.	€/M
241001	● 12 (1,1) R.100M	100	1,02
241002	● 12 (1,1) R.100M	100	1,02
241009	● 12 (1,1) R.50M	50	2,45
241003	● 16 (1,5) R.100M	100	1,74
241004	● 16 (1,5) R.100M	100	1,74
241040	● 16 (1,5) R.50M	50	4,19
241011	● 16 (1,8) R.100M	100	2,01
241012	● 16 (1,8) R.100M	100	2,01
241010	● 16 (1,8) R.50M	50	4,84
241005	● 20 (1,9) R.60M	60	2,64
241006	● 20 (1,9) R.60M	60	2,64
241007	● 25 (2,3) R.60M	60	3,87
241008	● 25 (2,3) R.60M	60	3,87